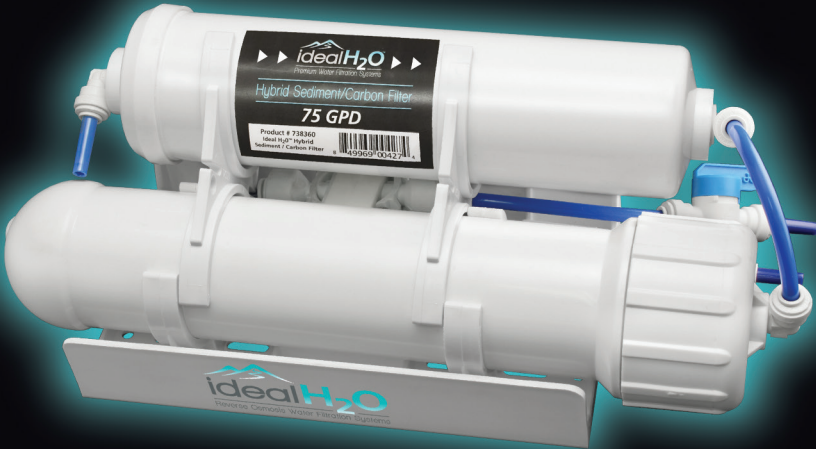


# SETUP AND MAINTENANCE GUIDE

Reverse Osmosis Water Filtration System



**75 GPD RO SYSTEM**  
Product # 738325

# WHAT'S IN THE BOX?



## Reverse Osmosis System -75 GPD



# IDEAL H<sub>2</sub>O® REVERSE OSMOSIS 100 GPD PART LIST:

## Three Stage 75 GPD Reverse Osmosis unit includes:

1. Hybrid Sediment / Coconut Carbon filter - Removes chlorine, odor sediment, particulates, dirt, rust and other chemicals.
2. Reverse Osmosis Membrane - one 75 GPD filter - removes total dissolved solids.
3. Water Source Inlet Tubing, 3/8" (White) - w/ Garden Hose Connector.
4. Filtered Water Outlet Tubing, 1/4" (Blue)
5. Waste Water Outlet Tubing, 1/4" (Black)
6. Shut Off Valve - Allows user to quickly turn off flow of water from the RO system.

UNIT SIZE	13.8" w x 5.25" h and weight: 3.9 lbs.
CAPACITY	75 gpd / 4 gph
PRESSURE	Min - 40 psi; Max - 85 psi
TEMPERATURE	Min - 40°F; Max - 110°F
INLET TDS	Min - 50 ppm; Max - 1000 ppm
HARDNESS	Min - 0 grain (0 mg/l); Max - 10 grain (171 mg/l)
OPERATING pH	Min - 3; Max - 11
PERMEATE/WASTE	1 gallon permeate : 1 gallons waste
EFFICIENCY	75 gpd @ 60 psi, 77°F, 500ppm

## QUICK OPERATION GUIDE

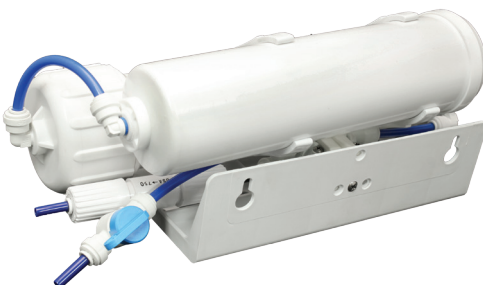
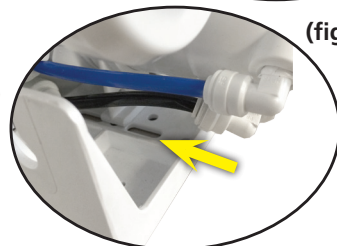
The following steps will get you set up in just a few minutes. Please read each step carefully. If you have any questions, please refer to our website at [www.IdealH2O.net](http://www.IdealH2O.net) for information and videos on setup & maintenance.

### Step 1 – Check tubing connections on unit:

To prevent any issues with installing your RO system, we have pre-installed all of the tubing in the correct inlet and outlet fittings. However, the tubes may have come loose during shipping. Please double check all tube connections throughout the system. With one hand, hold the fitting while pushing the tubing firmly (figs. C). Doing this will prevent leaks in the system.

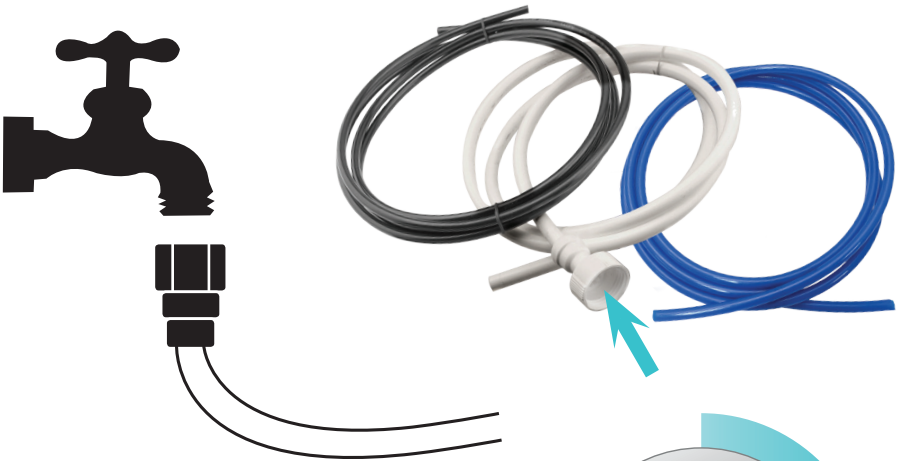


(figs. C)



## Step 2 – Starting up your RO System

Connect the white inlet tube to your water supply and slowly turn on the water source. Once the sediment and carbon filter housings have water in them, turn the water supply fully on.



*Allow water to run 30 to 40 minutes to flush the system before use, especially after changing the filters and membranes.*



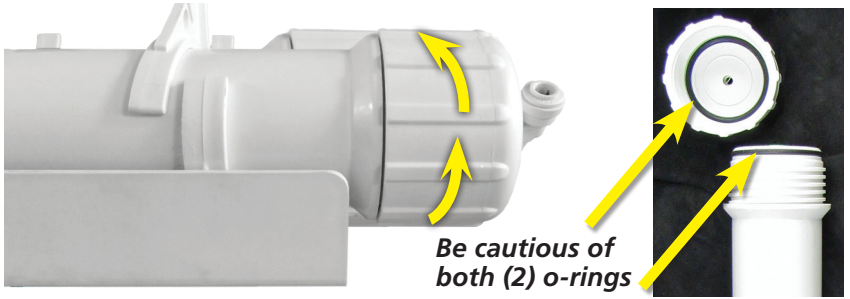
## MAINTENANCE AND FILTER CHANGES

The Ideal H<sub>2</sub>O® 75 GPD Reverse Osmosis System has a hybrid carbon / sediment filter that will need to be replaced after a certain time period of use. By keeping up with the replacement of your hybrid filter, you can double to triple the life of your RO membrane. This length of time that this filter will last is completely dependent on how clean your water source is.

The RO Membrane will usually last 6 months to 2.5 years. Again, by changing your hybrid filter regularly, the RO membrane will last much longer.

# REPLACING THE RO MEMBRANE

**Step 1** – Unscrew the cap from the membrane housing.

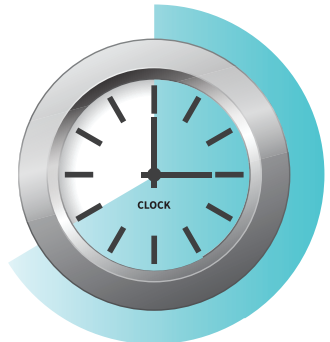


**Step 2** – Remove the membrane from the housing with a pair of needle nose pliers. Hold onto the membrane housing while you are pulling the membrane out.



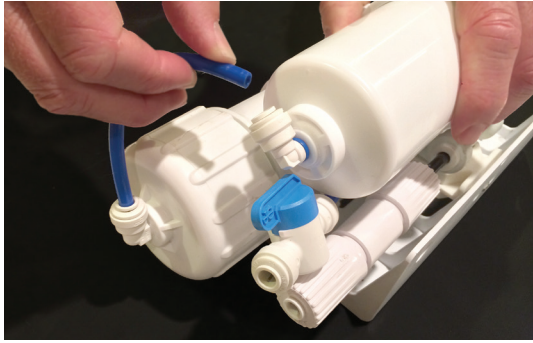
**Step 3** – Insert new membrane into membrane housing and screw the cap back onto the membrane housing, making sure the cap is firmly hand tightened.

***Always run system  
30 to 40 minutes before use,  
especially after changing the filter  
and RO membranes.***



# REPLACING THE HYBRID FILTER

**Step 1** – Carefully disconnect water lines from the hybrid filter.



**Step 2** – Remove the hybrid filter by carefully pulling filter from each filter brace. Snap new filter into place with label arrows facing towards main water line. Refer to unit image on page 2.



**Step 3** – Re-connect the water lines to the hybrid filter. Make sure all lines are tightly in place before running water through filter.



# REPLACEMENT FILTER INFORMATION



REPLACEMENT FILTER INFO	PART NUMBER	FILTER REPLACEMENT TIMELINE
<b>A</b> RO Membrane	738340	6 months to 2.5 years
<b>B</b> Hybrid Sediment / Carbon Filter	738360	6 to 12 months



For all warranty inquiries, please contact  
Ideal H<sub>2</sub>O® at (888) 582-2762.



[www.IdealH2O.net](http://www.IdealH2O.net)

Scan this QR code or visit our website for  
how-to videos and other product information.

Exclusively distributed by:



Sunlight Supply, Inc.

[www.sunlightsupply.com](http://www.sunlightsupply.com)

#111295 01272017LS