

# SETUP AND MAINTENANCE GUIDE

DE-CHLORINATOR SYSTEM - 5,000 & 10,000 GPD



**De-Chlorinator System**  
**5,000 GPD**  
**Product # 738317**

**De-Chlorinator System**  
**10,000 GPD**  
**Product # 738322**

# WHAT'S IN THE BOX?



## DE-CHLORINATOR SYSTEM - 5,000 GPD



### 5,000 GPD De-Chlorinator system includes:

1. 4.5 in. x 10 in. polyspun sediment filter – removes sediment, particulates, dirt, and rust.
2. 4.5 in. x 10 in. catalytic coconut carbon filter – removes chlorine, odor, and other chemicals.
3. 5 ft. of white 3/8 in. inlet tubing.
4. 5 ft. of blue 3/8 in. outlet tubing.
5. Inline shut-off valve.
6. Wall mount bracket.
7. Garden hose connector.
8. Filter wrench – for safe removal of filter housing.

## DE-CHLORINATOR SYSTEM - 10,000 GPD



### **10,000 GPD De-Chlorinator system includes:**

1. 4.5 in. x 20 in. polyspun sediment filter – removes sediment, particulates, dirt, and rust.
2. 4.5 in. x 20 in. catalytic coconut carbon filter – removes chlorine, odor, and other chemicals.
3. 5 ft. of white 3/8 in. inlet tubing.
4. 5 ft. of blue 3/8 in. outlet tubing.
5. Inline shut-off valve.
6. Wall mount bracket.
7. Garden hose connector.
8. Filter wrench – for safe removal of filter housing.

# QUICK OPERATION GUIDE

The following steps will get you set up in just a few minutes. Please read each step carefully. If you have any questions, please refer to our website at [www.IdealH2O.net](http://www.IdealH2O.net) for information and videos on setup & maintenance.

## Step 1 – Connect the tubing to the unit:

Insert the BLUE filtered water outlet tubing into connection marked OUT. (fig. A).

Insert the WHITE water source inlet tubing into connection marked IN. (fig. B).

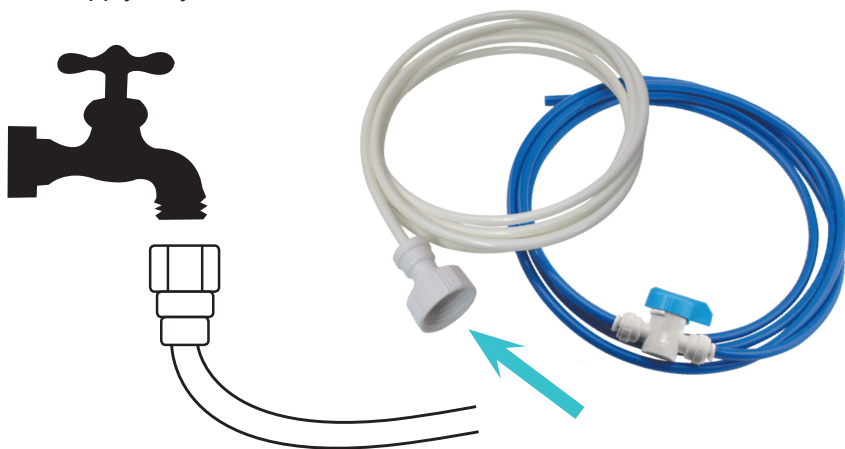


(fig. A)

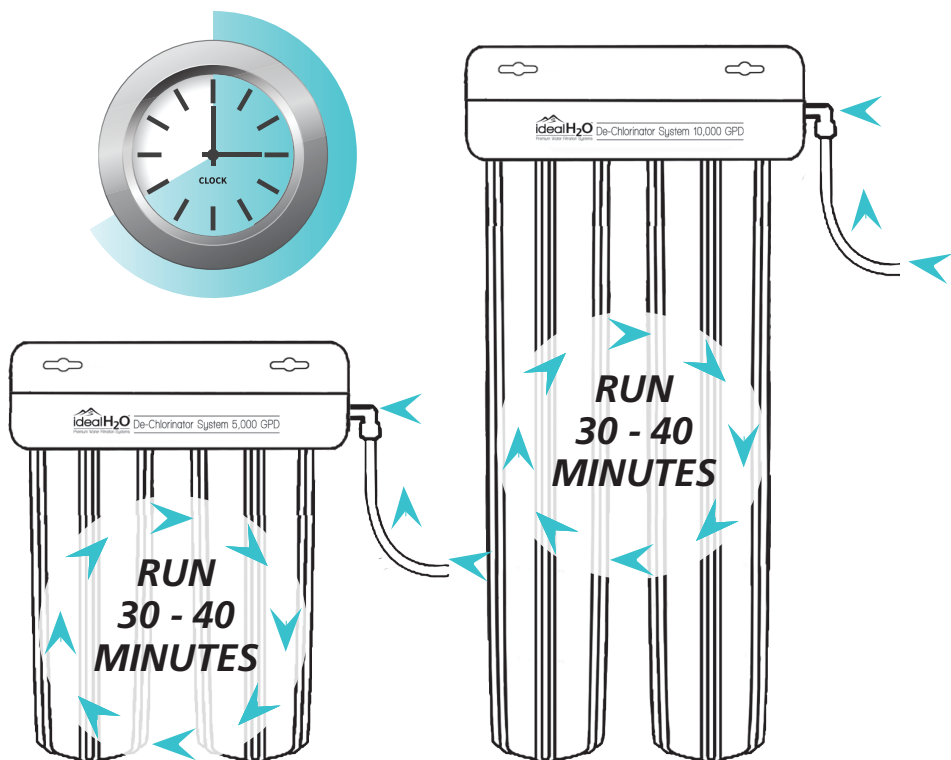
(fig. B)

## Step 2 – Starting up your De-chlorinator System:

Connect the white inlet tube to your water supply and slowly turn on the water source. Once the sediment and carbon filter housings have water in them, turn the water supply fully on.



***Always run system 30 to 40 minutes before use, especially after changing the filters.***



# REPLACING THE PRE-FILTERS

**Step 1 – Unscrew the filter housing from the system using the filter wrench included with your system.**



**Step 2 – Replace catalytic carbon and/or sediment pre-filters.**



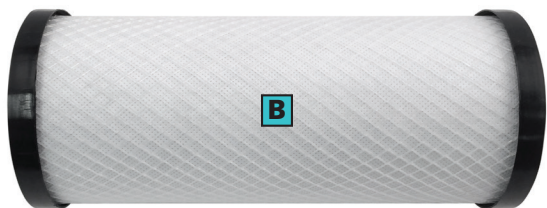
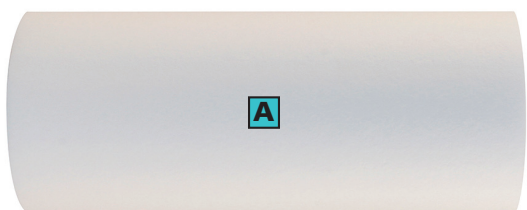
**Step 3 – Screw the filter housing back onto the De-Chlorinator system, firmly hand tightening these.**

***Do not use the wrench to tighten.***

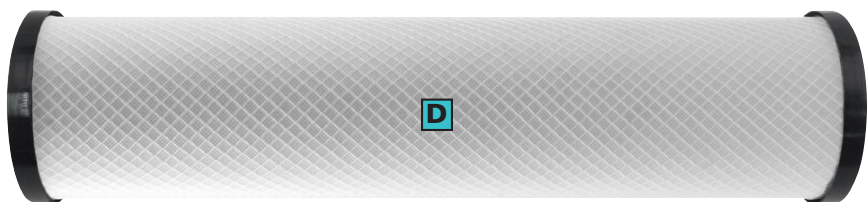
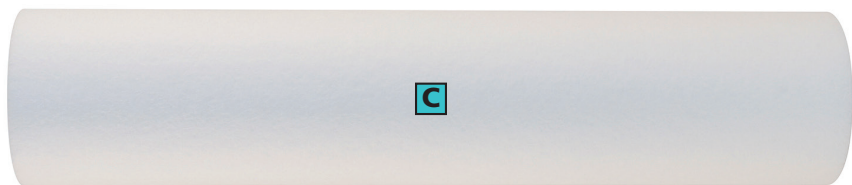
***Be cautious of the o-rings***



# REPLACEMENT FILTER INFORMATION



5,000 GPD DE-CHLORINATOR REPLACEMENT FILTER		PART#	FILTER REPLACEMENT TIMELINE
<b>A</b>	Polyspun Sediment Filter - 4.5" x 10"	738356	6 to 12 months
<b>B</b>	Catalytic Carbon Filter - 4.5" x 10"	738380	6 to 12 months



10,000 GPD DE-CHLORINATOR REPLACEMENT FILTER		PART#	FILTER REPLACEMENT TIMELINE
<b>C</b>	Polyspun Sediment Filter - 4.5" x 20"	738358	6 to 12 months
<b>D</b>	Catalytic Carbon Filter - 4.5" x 20"	738416	6 to 12 months



For all warranty inquiries, please contact  
Ideal H<sub>2</sub>O® at (888) 582-2762.



[www.IdealH2O.net](http://www.IdealH2O.net)

Scan this QR code or visit our website for  
how-to videos and other product information.



Exclusively distributed by:

**Sunlight Supply, Inc.**

[www.sunlightsupply.com](http://www.sunlightsupply.com)