

# SETUP AND MAINTENANCE GUIDE

Reverse Osmosis Water Filtration System



**100 GPD  
RO SYSTEM**

Product # 738300

**200 GPD  
RO SYSTEM**

Product # 738305

# WHAT'S IN THE BOX?



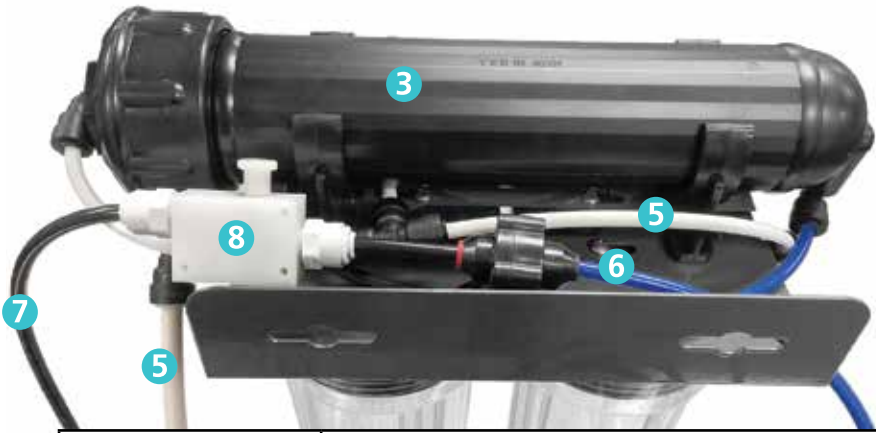
## Reverse Osmosis - 100 GPD



# IDEAL H<sub>2</sub>O™ REVERSE OSMOSIS 100 GPD PART LIST:

## Three Stage 100 GPD Reverse Osmosis unit includes:

1. Poly Spun Sediment Pre-filter - Removes sediment, particulates, dirt and rust.
2. Coconut Carbon Block Pre-filter - Removes chlorine, odor and other chemicals.
3. Reverse Osmosis Membrane - one 100 GPD filter - removes total dissolved solids.
4. System Pressure Gauge - measures water pressure and quickly identifies best pressure levels.
5. Water Source Inlet Tubing, 3/8" (White) - w/ Garden Hose Connector.
6. Filtered Water Outlet Tubing, 1/4" (Blue)
7. Waste Water Outlet Tubing, 1/4" (Black)
8. Flow Restrictor / Membrane Flush Valve - reduces the amount of waste water produced from the system, and allows user to flush membrane periodically to extend the life of the RO membrane.
9. Shut Off Valve - Allows user to quickly turn off flow of water from the RO system.
10. Filter Wrench - for safe removal of filter housing.



UNIT SIZE	13.8" w x 14.8" h and weight: 7.9 lbs.
CAPACITY	100 gpd / 4 gph
PRESSURE	Min - 40 psi; Max - 125 psi
TEMPERATURE	Min - 40°F; Max - 110°F
INLET TDS	Min - 50 ppm; Max - 1000 ppm
HARDINESS	Min - 0 grain (0 mg/l); Max - 10 grain (171 mg/l)
OPERATING pH	Min - 3; Max - 11
PERMEATE/WASTE	1 gallon permeate : 3 gallons waste
EFFICIENCY	100 gpd @ 60 psi, 77°F, 500ppm

---

# Reverse Osmosis - 200 GPD

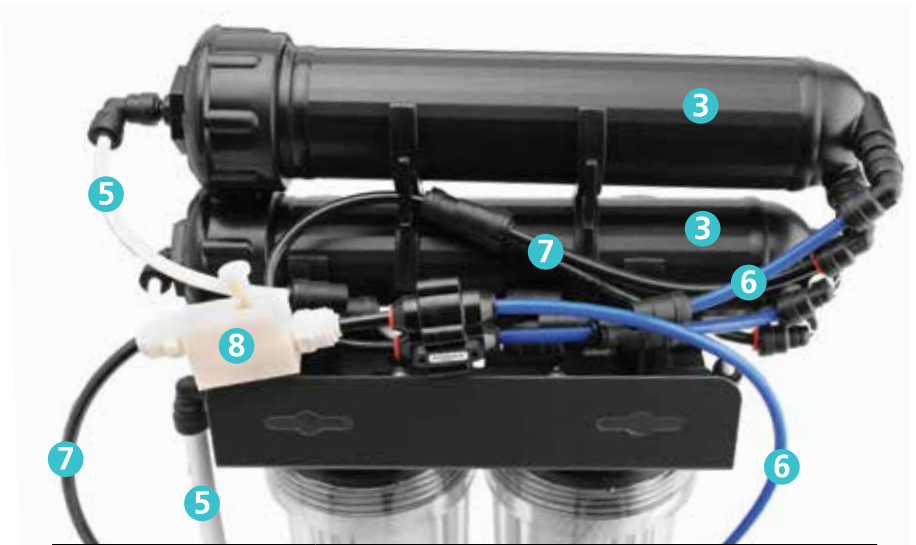
---



# IDEAL H<sub>2</sub>O™ REVERSE OSMOSIS 200 GPD PART LIST:

## Three Stage 200 GPD Reverse Osmosis unit includes:

1. Poly Spun Sediment Pre-filter - Removes sediment, particulates, dirt and rust.
2. Coconut Carbon Block Pre-filter - Removes chlorine, odor and other chemicals.
3. Reverse Osmosis Membrane - two 100 GPD filters - removes total dissolved solids.
4. System Pressure Gauge - measures water pressure and quickly identifies best pressure levels.
5. Water Source Inlet Tubing, 3/8" (White) - w/ Garden Hose Connector.
6. Filtered Water Outlet Tubing, 1/4" (Blue)
7. Waste Water Outlet Tubing, 1/4" (Black)
8. Flow Restrictor / Membrane Flush Valve - reduces the amount of waste water produced from the system, and allows user to flush membrane periodically to extend the life of the RO membrane.
9. Shut Off Valve - Allows user to quickly turn off flow of water from the RO system.
10. Filter Wrench - for safe removal of filter housing.



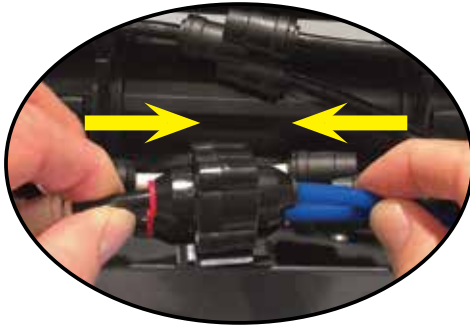
UNIT SIZE	14" w x 17.3" h and weight: 9.1 lbs.
CAPACITY	200 gpd / 8 gph
PRESSURE	Min - 40 psi; Max - 125 psi
TEMPERATURE	Min - 40°F; Max - 110°F
INLET TDS	Min - 50 ppm; Max - 1000 ppm
HARDINESS	Min - 0 grain (0 mg/l); Max - 10 grain (171 mg/l)
OPERATING pH	Min - 3; Max - 11
PERMEATE/WASTE	1 gallon permeate : 3 gallons waste
EFFICIENCY	200 gpd @ 60 psi, 77°F, 500ppm

# QUICK OPERATION GUIDE

The following steps will get you set up in just a few minutes. Please read each step carefully. If you have any questions, please refer to our website at [www.IdealH2O.net](http://www.IdealH2O.net) for information and videos on setup & maintenance.

## Step 1 – Check tubing connections on unit:

To prevent any issues with installing your RO system, we have pre-installed all of the tubing in the correct inlet and outlet fittings. However, the tubes may have come loose during shipping. Please double check all tube connections throughout the system. With one hand, hold the fitting while pushing the tubing firmly (**fig. C**). Doing this will prevent leaks in the system.

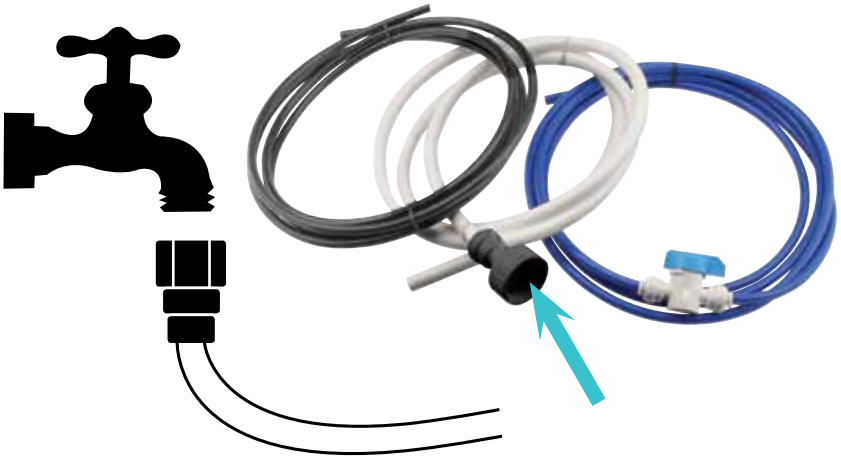


(fig. C)  
Check all tube connections

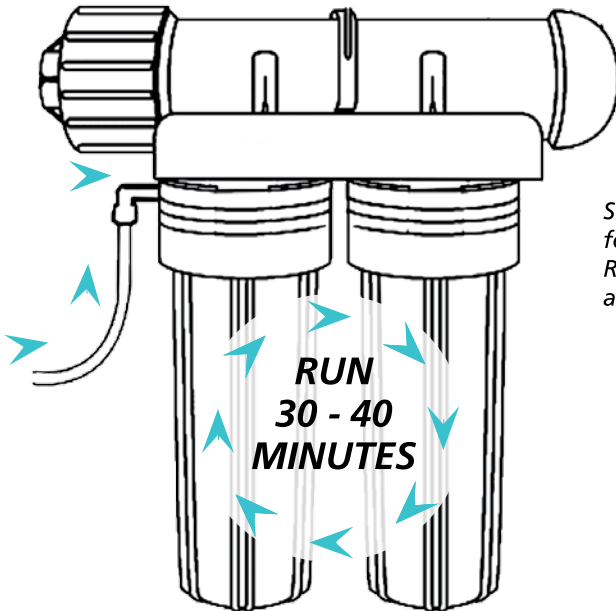


## Step 2 – Starting up your RO System

Connect the white inlet tube to your water supply and slowly turn on the water source. Once the sediment and carbon filter housings have water in them, turn the water supply fully on.



*Allow water to run 30 to 40 minutes to flush the system before use, especially after changing the filters and membranes.*



*See pages 9 & 10 for replacing RO membranes and filters.*

# MAINTENANCE AND FILTER CHANGES

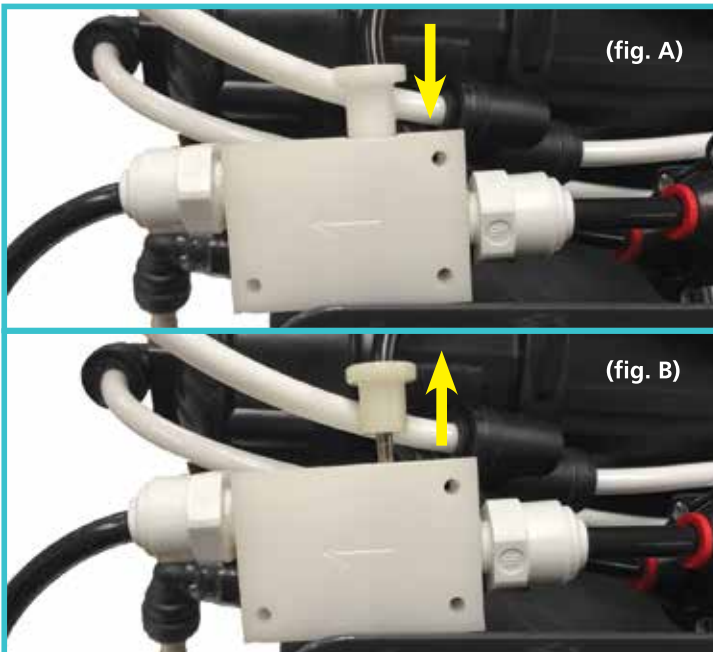
The Ideal H2O Reverse Osmosis Systems have pre-filters that will need to be replaced after a certain time period of use. By keeping up with the replacement of your filters, you can double, or even triple, the life of your RO membrane. This length of time these filters will last is completely dependent on how clean your water source is.

The RO membrane will usually last 6 months to 2.5 years. Again, by changing your pre-filters regularly, the RO membrane will last much longer.

## RO MEMBRANE FLUSH VALVE

The Ideal H2O™ RO Units come with a unique membrane flush valve that will also help extend the life of your membrane. Flushing the RO membrane with this valve every 30 to 60 days will extend the membrane's performance exponentially.

On the back side of your RO system, attached to the black waste water line, you will see a small white inline box with a round white pin on top (**fig. A**). To flush the RO membrane, simply pull the white pin away from the white inline box (**fig. B**). By doing this, you are completely opening up the waste water line and flushing out harmful buildup inside the RO membrane.



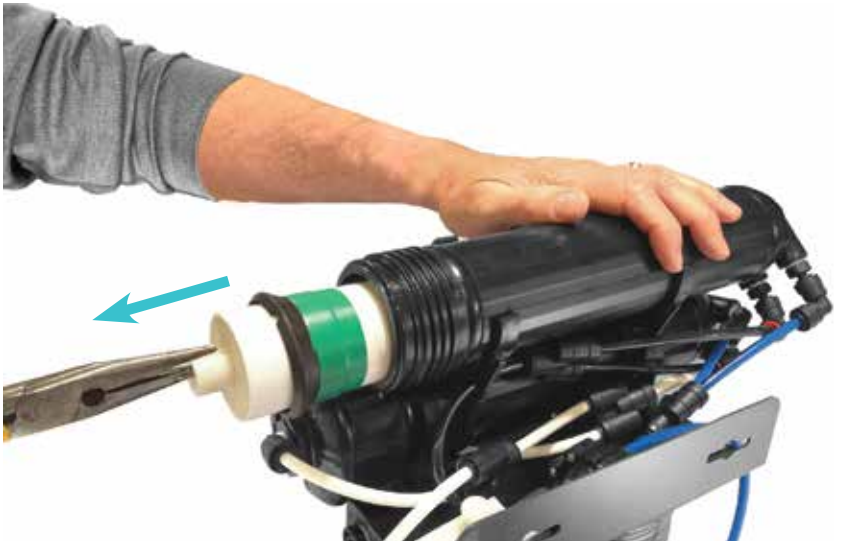


# REPLACING THE RO MEMBRANE

**Step 1** – Unscrew the black cap from the membrane housing.

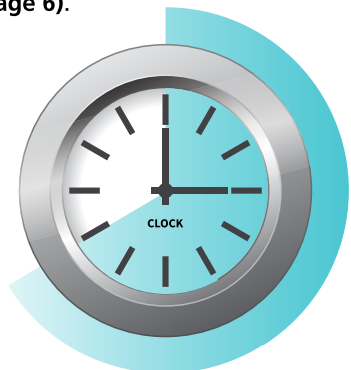


**Step 2** – Remove the membrane from the housing with a pair of needle nose pliers. Hold onto the membrane housing while you are pulling the membrane out.



**Step 3** – Insert new membrane into membrane housing and screw the black cap back onto the black membrane housing, making sure the cap is firmly hand tightened (refer to step 1 on page 6).

***Always make sure to run the system for 30 to 40 minutes before use, especially after changing the filters and RO membranes***



# REPLACING THE PRE-FILTERS

**Step 1 – Unscrew the filter housing from the RO System using the filter wrench included with your system.**



**Step 2 – Replace sediment and/or carbon block pre-filters.**



**Step 3 – Screw the filter housing back onto the RO system, firmly hand tightening these. Do not use the wrench to tighten.**



# REPLACEMENT FILTER INFORMATION



REPLACEMENT FILTER INFO	PART NUMBER	FILTER REPLACEMENT TIMELINE
<b>A</b> RO Membrane	738340	6 months to 2.5 years
<b>B</b> Sediment Filter - 10"	738335	6 to 12 months
<b>C</b> Coconut Carbon Filter - 10"	738330	1,000 - 1,500 gallons of clean water



For all warranty inquiries, please contact  
Ideal H<sub>2</sub>O™ at (888) 582-2762.



[www.IdealH2O.net](http://www.IdealH2O.net)

Scan this QR code or visit our website for  
how-to videos and other product information.



Exclusively distributed by:

National Garden Wholesale®

Sunlight Supply, Inc.

[www.sunlightsupply.com](http://www.sunlightsupply.com)