

OWNER'S MANUAL



Up to 60 Pint Commercial Grade DEHUMIDIFIER

Product #700834

IMPORTANT: After unpacking (or accidental tip-over) allow dehumidifier to stand upright for 20 minutes before starting.

Contents

Safety Information.....	1
Features, Specifications & Getting Started	2
Installation	3
Operation	4
Cleaning & Storage.....	5
Troubleshooting	6

Thank you for purchasing an Ideal-Air™ Dehumidifier!

To get the most out of your dehumidifier and enjoy safe, reliable operation, please thoroughly read and understand this Owner's Manual before operation. Keep it for future reference.

Safety Information

To prevent injury to user, others and/or property damage, the following safety instructions must be followed. Ignoring these instructions may cause harm or damage due to faulty operation.

Seriousness is indicated by the following symbols:

**WARNING!**

Possible death or serious injury.

**CAUTION**

Possible injury or property damage.

WARNING!

- Do not exceed the rating of the power circuit or share the outlet with other appliances.
- Do not start or stop the unit by switching the power source on/off or by plugging or unplugging the power cord.
- Always use the factory-installed 3-prong, grounded, polarized power plug and cord.
- Never attempt to operate unit with a damaged or modified power cord.
- Do not insert or remove plug from outlet with wet hands or standing in water.
- Do not place dehumidifier near heat sources, flammable materials or hazardous chemicals.
- Disconnect the power if strange sounds, smells or smoke come from the unit.
- Never attempt to take apart or repair the dehumidifier yourself. Repairs must be done by factory authorized service personnel.
- Before cleaning the dehumidifier, always turn off the power and unplug the power cord.
- Do not drink or use any water drained from the unit.
- Do not use extension cords with this unit.

CAUTION

- Do not install this dehumidifier in closets, cabinets or other small spaces.
- Do not place dehumidifier where water may splash or leak on, or into the unit.
- Never cover the intake or exhaust openings with clothes, towels or other objects.
- Use extreme caution when operating near children.
- Never insert fingers or foreign objects into ventilation grilles or other openings.
- Do not place heavy objects on the power cord or run it under carpets and rugs.
- Do not climb, sit or stand on the unit, or place objects on top of it.
- Clean air filter often (depending on dust conditions), making sure it is installed securely.
- If water enters the unit due to a leak or spill, turn it off and disconnect the power. Contact a qualified service technician.

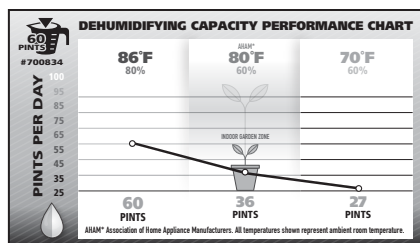
Features

Your Ideal-Air™ Up to 60 Pint Dehumidifier incorporates the latest in dehumidification technology and manufacturing techniques to ensure reliability and long service life. Some of these features include:

- Digital Control System for stable and accurate temperature control
- High efficiency energy use for economical operation
- R-410A refrigeration system that is safe and environmentally friendly
- Auto over-current protection system
- Retains settings if the unit is unplugged or in case of power outage (auto restart)

Specifications

Supply Voltage	115V / 60 Hz / 1 Phase
Power Consumption	6.9 Amps / 780 Watts*
Power Cord	6' L, 110-120 VAC
Temperature Range	45°F to 105°F
Refrigerant	R410A
Dimensions	16-11/16"D x 12-11/16"W x 23-5/16"H
Unit Weight	62.8 lbs.



*Power consumption at 80°F/60%RH

GETTING STARTED

UNPACKING THE DEHUMIDIFIER

Please DO NOT dispose of any packaging until you have checked that all parts are included and the unit is operational. *In the unlikely event of missing parts or damage, contact Ideal-Air™ immediately (see back cover).* Do not leave children unattended with the unit or its packaging. Disposal of all materials must be carried out responsibly, safely and recycled wherever possible.

Package Contents:

- 1 Dehumidifier Unit
- 1 Owner's Manual
- 2 wall mounting brackets

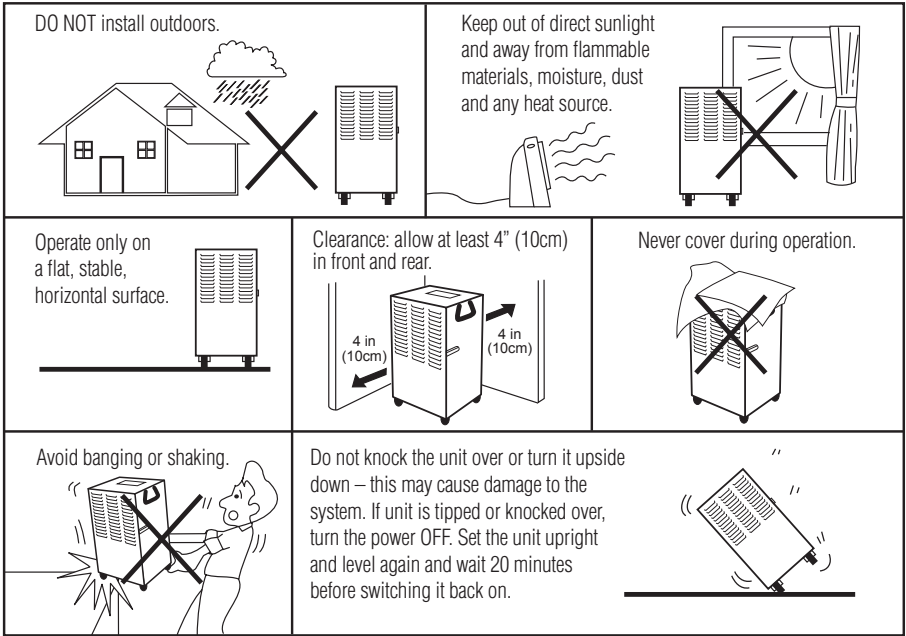
IMPORTANT!

- Use a grounded power outlet, and a circuit used only for the dehumidifier (any electrical work must be done by a qualified electrician).
- Power source must conform to the power requirements specified on the product nameplate.
- ALWAYS disconnect the power supply when installing or cleaning the unit.

Installation

INSTALLING THE DEHUMIDIFIER

For best dehumidification and safest operation, install the unit indoors in a draft-free room.



MOUNTING BRACKETS (OPTIONAL)

When mounting the supplied wall brackets, you will need a level, screws and a drill.

- You will need to locate the stud framework inside the wall to support the weight.
- If you cannot locate a stud - choosing the right hanging hardware is key. It is recommended to use steel toggle bolt anchors or snap toggle hardware - consult your local hardware store for these options.
- Make sure the wall and stud support can hold at least 4X's the Dehumidifiers weight (62.8 lbs)
- With your level, draw a horizontal line between 2 studs or hanging hardware that is 7¼" apart.
- Line up the top hole of your bracket on horizontal line and secure brackets with heavy duty screws if affixing to stud framework or select hardware recommended above a stud can't be located (Repeat for bottom bracket hole).
- With the brackets secured the dehumidifier now can be mounted ontop of the brackets.

NOTE: Dehumidifier will mount with front door facing to the right, NOT forward.

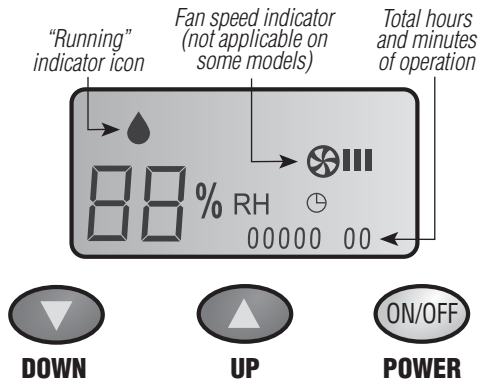
Identify (4) mounting bolts. Identify (4) pre-drilled mounting holes on bottom side of dehumidifier. Place unit on and top of brackets and align holes on bottom of unit with holes on top of brackets. Once the unit is placed on mounted brackets, and you have lined up the holes - fasten bolts into the pre-drilled holes located on the bottom of the unit and secure tightly.



Operation

Starting the Dehumidifier:

Plug the unit into power source. You will hear a beep confirming that power is recognized by the dehumidifier. Press the **POWER** button once to turn the unit ON. The display will show the humidity level previously set. Then, a few seconds later it will display the *actual* ambient humidity. The “Running” indicator icon will also flash continuously (standby mode), then remain solid while unit is in dehumidifying operation.



Setting Humidity Level: To raise or lower the present humidity setting, press the **UP** or **DOWN** buttons to enter desired humidity level. The actual humidity (from 30-90%) displays continuously while the dehumidifier is working. Once the set humidity level is reached, the unit will stop, then restart automatically when the humidity rises above the set level. The dehumidifier will run continuously if humidity level is set to 30%, displaying “CO” for continuous operation. Note that the unit will not run if humidity is set to a higher value (within 3%) than the actual humidity.

Automatic Defrost: When the dehumidification system reaches a certain temperature, the unit will automatically defrost and drain any melt water into the reservoir.

Emptying the Reservoir: Water removed from the air is drained into the reservoir, which must be emptied at regular intervals. When reservoir is full, the unit will stop and beep twice every 5 minutes. *The unit will not run until you empty the reservoir.* To set up continuous drainage, remove the reservoir and pull out the rubber stopper on the bottom. Connect a drain hose that is routed to a secure drainage area and replace reservoir in unit.

ERROR CODES

- “E1” – Humidity Sensor Error
- “E2” – Refrigeration Sensor Error
- “E4” – Water reservoir is full and needs to be emptied

Turn off POWER and unplug unit and wait 30 seconds. Plug back in and turn POWER back on. If the error codes re-appear, contact Ideal-Air™ service.

Cleaning & Storage

CLEANING THE DEHUMIDIFIER

Always make sure unit is unplugged before performing any cleaning!

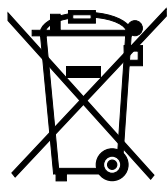
For safe, efficient operation and long service life, it is essential to clean the dehumidifier regularly. Thorough cleaning is recommended every 1-2 months, including:

- Rinse collected debris from filter and internal reservoir with clear, lukewarm water (detergent, soap or bleach is NOT recommended). The housing, digital control panel, power switch and other external surfaces must be cleaned with a soft, dry cloth. *NEVER immerse the unit in water or spray it down with a hose!*
- Clean air filter every 2 weeks or so, depending on dust conditions:
 1. Open latch on right side of unit and open door.
 2. Air filter is located behind front grill at the top of the door. Gently pull it up and slightly toward you to remove.
 3. Remove dust with a brush or vacuum cleaner and rinse thoroughly in lukewarm water. Make sure filter is completely DRY before reinstalling it.

STORING THE DEHUMIDIFIER

Disconnect power plug from wall. Make sure reservoir is empty and dry. **DO NOT INVERT THE UNIT TO DRAIN!** Clean and dry air filter, wipe down external surfaces with a soft cloth, cover with plastic bag, insert into carton and store in a safe, dry place.

PLEASE BE RESPONSIBLE



DO NOT dispose of this product in the trash or into any unsorted waste stream! It may contain hazardous substances that can leach into groundwater and find their way into the food chain. This unit contains VALUABLE RESOURCES that are easy to recycle and re-use. Services available may include:

- A. Municipal Collection Systems:** Most cities and towns have recycling programs where electronic waste can be turned in for recycling free of charge.
- B. Retailer Return:** When buying a new product, many retailers will take back an old product free of charge.
- C. Scrap Dealers:** Many scrap dealers will buy old electronics or take them free of charge.



Troubleshooting

Before calling technical support, check the troubleshooting chart below for solutions to the most common problems.

SYMPTOM	CAUSE	SOLUTION
Unit doesn't run Display is blank	Power is not turned on	Turn on the power
	Not plugged all the way in	Be sure the power cord is fully plugged in
	Fuse has blown	Change fuse on circuit board
Unit keeps turning itself on and off	Connected to wrong voltage and frequency	Apply to correct power source according to the nameplate
	Fan or compressor protection device has been activated	Check ventilation around unit. If heat is not accumulating, wait 3 minutes and attempt a restart
Humidity in room is not being lowered (or not at all)	Humidity setting is too high	Lower humidity setting
	Room is too large	Move to smaller room or purchase larger unit
	Humid air is leaking into room	Seal room as tightly as possible against humid air entry
	Air filter is clogged with dust	Clean air filter as directed on Page 5
	Not enough refrigerant	Have qualified personnel replenish refrigerant
	Compressor runs normally, but fan stops running and unit can't dissipate heat	Fan may need to be replaced by qualified service personnel
Unit is noisy and/or rattles	The base is not flat	Mount it on a flat base
	Check for loose screws	Unplug unit from power source and tighten loose screws

IMPORTANT! Always check the following before starting the unit:

- ✓ Reservoir has been drained and there are no leaks or faulty connections.
- ✓ Power supply is correct and the plug is inserted completely into the outlet.
- ✓ Air filter is clean, all vents are unobstructed and nothing is sitting or leaning on the unit.

IMPORTANT

Product not working properly?

DO NOT return this product to the store where you purchased it.

Contact Ideal-Air™ Support directly
at support@ideal-air.com or call

1-877-943-3251

For answers to the most common questions and a complete technical support library please visit www.ideal-air.com



Vancouver, Washington

www.ideal-air.com

Product #700834 • SD012016

All design and specifications herein are subject to change without notice for product improvement. Contact Ideal-Air™ for details, updates and other information.